

Johan Rockstrom | madrimasd

 madrimasd.org/magazine/johan-rockstrom

[Skip to main content](#)

Secondary breadcrumb

[Magazine](#)

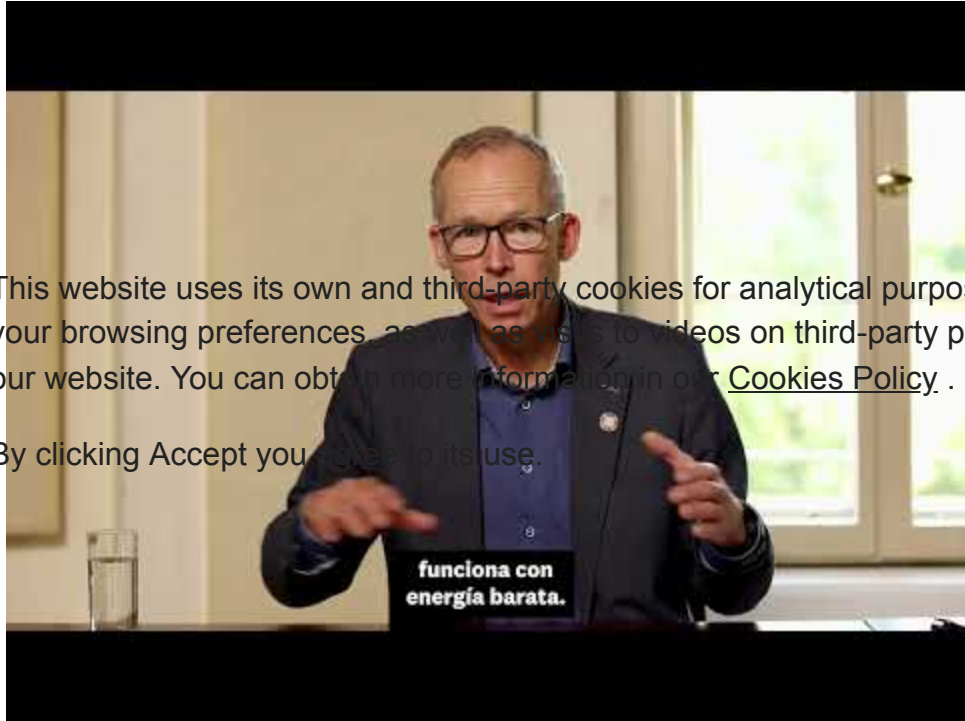
Johan Rockstrom

The Swedish researcher, one of the most recognized in environmental issues, has just won the Tyler Prize

Considered “the Nobel Prize for the Environment,” this year's Tyler Prize went to Swedish scientist Johan Rockström, deputy director of the Potsdam Institute for Research on the Impact of Climate Change.

One of Rockström's best-known ideas is that of “ [planetary limits](#) ”, a series of interrelated processes that threaten the stability of planet Earth and that include climate change, the loss of biodiversity or ocean acidification, among others.

We leave you here a recent interview subtitled in Spanish:



This website uses its own and third-party cookies for analytical purposes to take into account your browsing preferences, as well as visits to videos on third-party platforms and to improve our website. You can obtain more information in our [Cookies Policy](#).

By clicking Accept you agree to its use.

Watch Video At: <https://youtu.be/MAxWIT7IUe4>

Cover photo: [World Economic Forum](#)

Comments

Climate change is a...

Climate change is a constant in the geological history of the planet. The last one, the Holocene, began 12,000 years ago when sea level was 130 meters below current level, glaciers covered much of Europe, you could cross to England from Europe on foot, and the Black Sea was a freshwater lake. . A different issue is that human activity influences these cyclical natural tendencies. 6,000 years ago the Sahara was a fertile region and became a desert without human activity having any influence. Fossil fuels undoubtedly accelerate a natural trend, but the US is the main per capita emitter on the planet; it has not incessantly increased its production of fossil fuels in the worst possible way than through fracking, and in 2023 the historical record for the production of fossil fuels has been broken. Coal-sourced electricity. So Lafontaine's fable "the animals sick with the plague" seems like a good way to describe the current situation.

[Reply](#)

Add new comment

The content of this field is kept private and will not be shown publicly.

Content limited to 3000 characters, available: **3000**

To send comments, you must fill out all the requested fields. Likewise, we inform you that your name will appear published along with your comment, so in case you do not want it to be published, we suggest you enter an alias.

Rules of use:

- The opinions expressed will be the responsibility of their author and in no case of www.madrimasd.org.
- Comments contrary to Spanish laws or good use will not be accepted.
- The administrator may delete inappropriate comments, always trying to respect the right to freedom of expression.

CAPTCHA



Q N H 3 N

[Get new captcha!](#)

Enter the characters shown in the image.

This question is to test whether you are a human visitor or not and to prevent automated spam submissions.